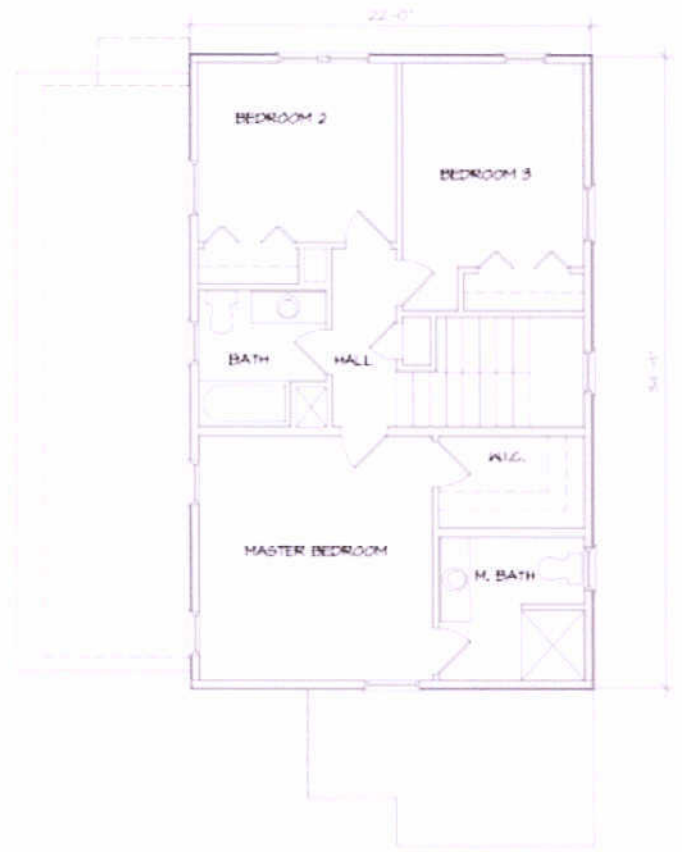
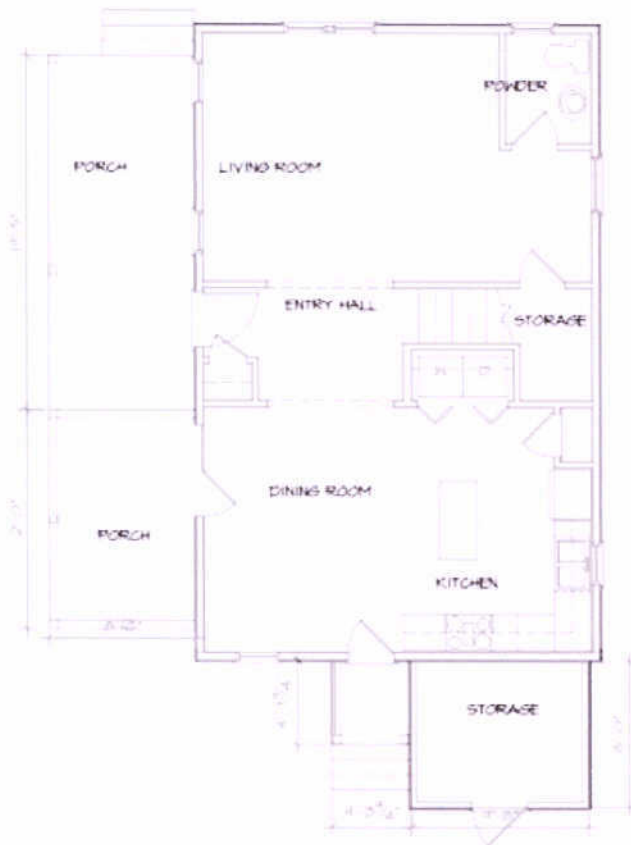


Lot 295 oak terrace preserve

This charming home is ready for construction. It has a “Lowcountry Farmhouse” feel to its architecture, and it provides a lot of space and features in a modest footprint with 1543 efficient square feet total. Over and above our standard, “Green” and interiors upgrades are available, as are some financing options with terms.



The plan is very efficient and convenient in its layout. Downstairs are the “public” gathering spaces – the living and dining rooms and the kitchen, as well as the optional screened porch shown here – and the Master Bedroom suite and two kids’/guest rooms/office are upstairs with a roomy bathroom and plenty of accessible storage and mechanical equipment spaces.

1450 5th Street W #300, N. Charleston, SC 29405
 contact David Hill at 843.475.3314 david@theverdcompany.com
 or Amy Hill at 843.475.3317 amy@theverdcompany.com

